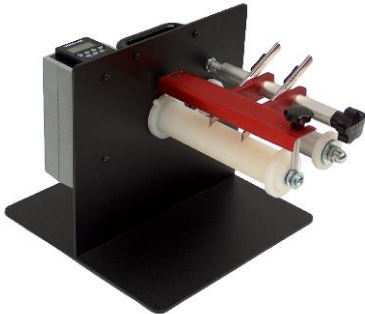


Slitters & Slitting Stations



Heavy-Duty Label Slitters & Slitting Stations.



S-100 with PC-1

- *Multiplies print efficiency.*
- *Save time and money!*
- *"Off-line" or "On-line" slitting.*
- *3- Years Parts and Labour Limited Warranty.*



S-100 & S-200 Label Slitters

The most convenient solution for slitting and rewinding narrow labels. LABELMATE Label Slitters allow you to print small labels several across and then slit them to the desired width. This multiplies your print efficiency and dramatically increases your print head life and ribbon usage efficiency. The rugged LABELMATE S-100 and S-200 are High-Speed, Heavy-Duty Label Slitters identical in construction except for size.

The Slitters can be used either "in-line" or "off-line". In "in-line" use, the Slitter is placed between the printer output and the Label Rewinder. The slitting speed is determined by the printer output speed. In "off-line" use, the Slitter is placed between a UCAT Unwinder and a CAT-3 Rewinder. Off-line slitting is recommended for production work or for use with three or more blades. With slitting speeds up to 125cm/sec in "off-line" mode, you'll make fast work of your slitting jobs.

An optional six- (6) digit PC-1 Pre-set Counter allows you to pre-set the number of labels to be slit. When the counter reaches the preset number, it sends a "HALT" signal to the Rewinder. Power to the Rewinder motor is then shut off and braking is applied. You'll have no annoying label spills to contend with.

S-100-SP Self-Powered Label Slitter

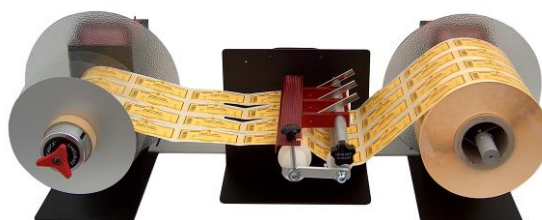
Simplifies label slitting by providing powered pinch rollers to pull the labels through the cutting blades rather than having to rely on a Label Rewinder to pull the labels. This results in a constant cutting speed and means you can use any LABELMATE Rewinder equipped with a "Quick-Chuck" to do your rewinding. Because the S-100-SP is self-powered, you can reliably use more cutting blades than on a Slitter that is powered by a Rewinder. You can add additional BH-1 Blade Holders for a total of five across the maximum label width of 175-mm. The S-100-SP is a great choice for you label needs (off-line slitting only).

The easily replaced slitting blades are click-adjustable, maximizing their useful life. Special, very sharp, ground steel blades are supplied with the S-100, S-200 and S-100-SP and are recommended for replacement.

No tools are required for blade adjustment or replacement. During slitting, the blades are stabilized with LABELMATE's proprietary system, giving a clean cut at all speeds. Rugged, heavy-gauge welded steel construction and precision parts yield a product of the highest quality.

S-100S and S-200S Slitting Stations

Complete off-line slitting stations including all elements needed to start slitting immediately. The station comprises a slitter, a rewinder, an unwinder and the accessories.



S-200-S

INDIVIDUAL LABEL SLITTERS

| P/N | MODEL | DESCRIPTION | LABEL WIDTH (mm) | SPEED (cm/sec) |
|--------|----------|---|------------------|----------------------------|
| LMS001 | S-100 | Heavy-Duty Label Slitter. Requires a CAT-3 Rewinder. Size: W x D x H: 355 x 280 x 250 mm. | 170 | Rewinder or Printer speed. |
| LMS002 | S-200 | Wide Heavy-Duty Label Slitter. Requires a CAT-3 Rewinder. Size: W x D x H: 435 x 280 x 250 mm. | 255 | Rewinder or Printer speed |
| LMS003 | S-100-SP | Self-powered Slitter Unit with 90-250VAC, 50-60Hz, 60VA Universal Power Supply. Size: W x D x H: 355 x 280 x 250 mm. | 175 | 30 |

LABEL SLITTERS OPTIONS

| P/N | MODEL | DESCRIPTION |
|--------|------------|--|
| LMX446 | PC-1 | Preset counter. Counts label batch size. Stops Rewinder automatically when job is finished. Factory installed. |
| LMX455 | BH-1 | Additional blade holder assembly. Includes precision high-speed blade. |
| LMX323 | HSB-10 | 10 precision high-speed blades for slitters. |
| LMX456 | LINK S-100 | Adjustable locking bar to lock units together in position (Unwinder, Slitter & Rewinder). |

Shipping Weight: Approx. 7 Kg.

Power: 220/240-vac 50-Hz. 120-vac 60-Hz power supply is also available.

COMPLETE SLITTING STATIONS

| P/N | MODEL | DESCRIPTION | LABEL WIDTH (mm) | SPEED (cm/sec) |
|--------|--------|--|------------------|----------------|
| LMS004 | S-100S | <ul style="list-style-type: none"> - UCAT-S Economy Heavy-Duty Label Unwinder with fixed brake; - S-100 Heavy-Duty Label Slitter; - 2 Blade Holders with Blades; - CAT-3-CHUCK Heavy-Duty Rewinder; 76mm diameter 'Quick-Chuck' is Standard; specify if 38, 40, 44 or 70mm diameter is desired instead. - 1 Aluminium and 2 Thin Plastic Separator Plates (220mm diameter); - 'LINK': Adjustable Locking Bar to lock units together in position. | 170 | 125 |
| LMS005 | S-200S | <ul style="list-style-type: none"> - UCAT-1-10" Heavy-Duty Label Unwinder; - S-200 Heavy-Duty Label Slitter; - 3 Blade Holders with blades; - CAT-3-CHUCK-10" Heavy-Duty Rewinder; - 1 Aluminium and 3 Thin Plastic Separator Plates (220mm diameter); - 'LINK': Adjustable Locking Bar to lock units together in position. | 255 | 125 |

Specifications are subject to change without notice. Data SLIT 09/2017



Labelmate
Chaussée de Ruisbroek 290
1620 Drogenbos (Belgium)

+32 2 375 69 60
brussels@labelmate.com
BTW BE 0674 877 993

ING BELGIUM
IBAN BE89 3630 6607 1285
BIC BBRUBEBB

labelmate.com