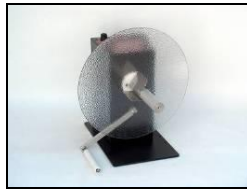


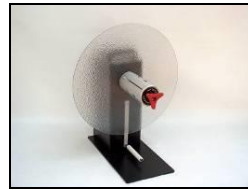
TENSION ARM / CONTROL ARM

Tension Arm for "CAT-TA" Rewinder Control Arm for "UCAT-3"/"UCAT-40" Unwinders

- **CAT-3-TA/CAT-40G-TA:** On-demand Rewinding Turns Off When Labels Stop Coming from Your Printer
- **UCAT-3 / UCAT-40:** On-demand Unwinding Turns On When Printer Needs Labels

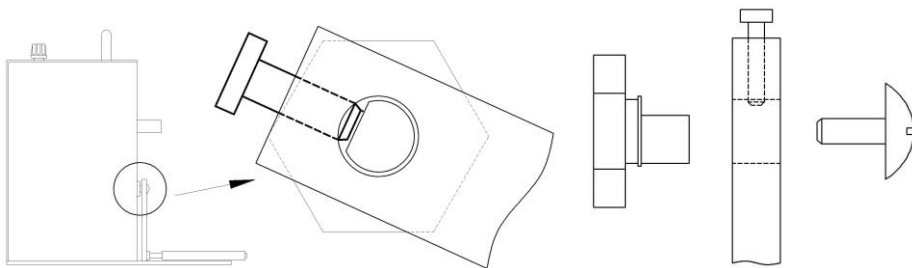


CAT-3-TA-STANDARD



UCAT-40

SET-UP:



1. **UCAT-40:** The Tension Arm/Control Arm is to be mounted vertically.
CAT-3-TA / CAT-40G-TA: The Tension Arm can be mounted facing either right or left, depending on which side the labels are coming from.
UCAT-3: The Control Arm can be mounted facing either right or left, depending on which side the labels need to go to.
2. Remove and keep the large Screw from the end of the Tension/Control Arm Shaft (the small Shaft below the main Motor Shaft).
3. Loosen the Set Screw at the end of the Tension/Control Arm and position the Arm with the Set Screw facing the flat on the Tension/Control Arm Shaft.
4. Tighten the Set Screw facing the flat on the Shaft.
5. Re-insert and tighten the Tension/Control Arm Shaft Screw snugly into the Tension/Control Arm Shaft.
The Unit is now ready for use.

USE – POWER REWINDING (CATs):

1. Run the label web to be rewound under the Rewinder Tension Arm and onto the take-up label Core on the Rewinder.
2. Place the Rewinder DIRECTION switch in the desired position according to which direction you want to rewind the labels.
3. Place the REWIND – SLIT Switch in the REWIND position and set the TORQUE ADJUST about 1/3 rotation from fully CCW as an initial setting.
4. Start your printer and observe how the labels are being rewound.
5. Adjust the TORQUE Control as needed to provide more or less (faster or slower) rewind power. As the Rewinder winds up the labels, the Tension Arm will rise, eventually causing the Rewinder to turn off. As the printer feeds more labels that need to be rewound, the labels and the Tension Arm will drop down, turning on the Rewinder again.
6. A weight can be placed on the Tension Arm if desired to control the rewind web tension.

USE – POWER UNWINDING (UCATs):

Refer to your Unwinder User Manual.

LABELMATE SPRL

290, Chaussée de Ruisbroek, 1620 Drogenbos, BELGIUM
TEL: +32 2.375.69.60 – FAX: +32 2.375.38.96

brussels@labelmate.com
www.labelmateeurope.com