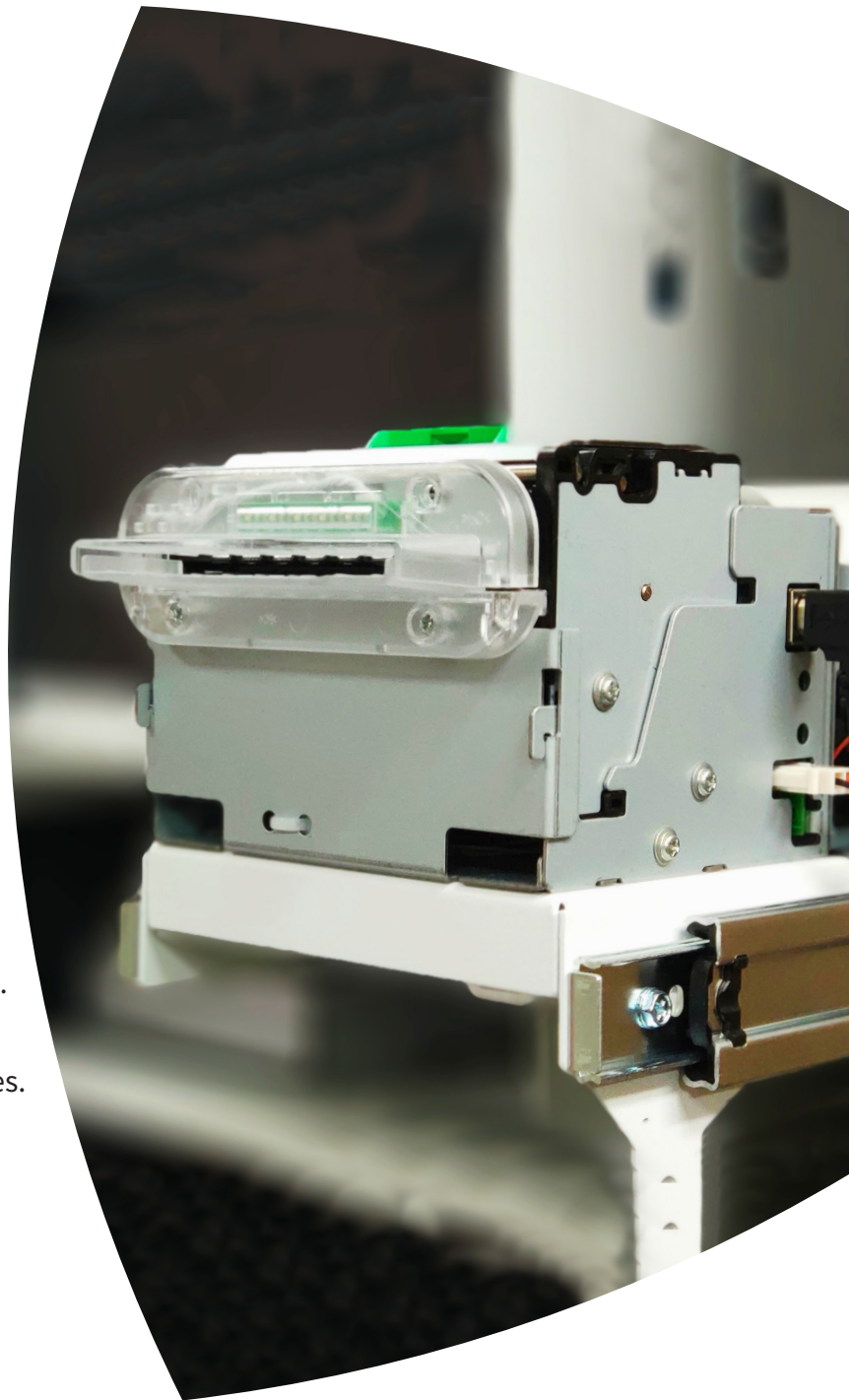


KOP-3 Series

Kiosk Printers

- Toshiba's compact, powerful and super fast receipt printers integrate into kiosk applications.
- Suitable for on-demand printing of payment, transport, registration and admission receipts.
- The perfect fit for applications such as digital kiosks, interactive terminals, vending machines.
- Choose Toshiba kiosk printers for reliability, the highest quality and peace of mind.



The ever-changing workplace

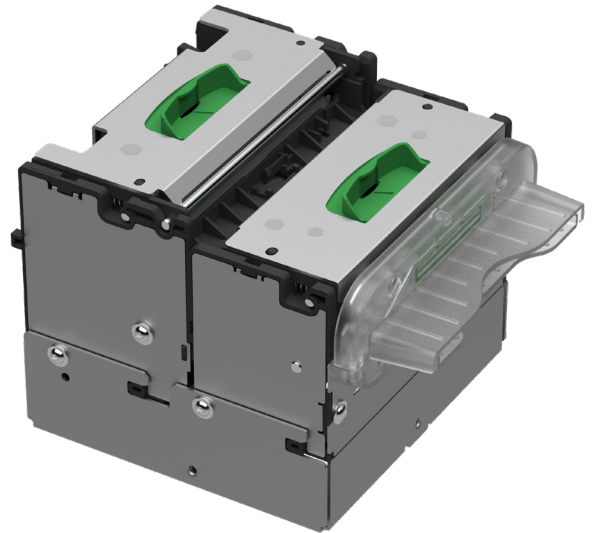
Delivering reliability to meet future challenges

Every business is unique. That's why Toshiba offers the most reliable print solutions that meet all your labelling requirements, day after day. Toshiba label printers provide connectivity and solutions to adapt to the needs of an ever-changing workplace.

Toshiba's receipt printers continue to deliver on our promise of Together Information – our commitment to collaborate with clients to provide tailored, cost-effective solutions that meet your evolving workplace needs.

Compact design, strong performance

Toshiba's integrated kiosk printer series consists of a range of compact models. The integrated and efficient design of the devices ensures super-fast performance, high print quality and exceptional reliability.



Highest reliability for your kiosk solution

Space-saving devices, tailored to the kiosk

The KOP-3 range consists of four different compact models in 3 different sizes to ensure that the printer fits perfectly in your kiosk. The clever design of the optional paper roll holders ensures the printer can be integrated into those systems even where space is at a premium. The integration possibilities are endless!

Reliable printing solution for any environment

The KOP-3 kiosk printers are designed to work continuously. They are extremely durable in even the most diverse environments such as retail, digital reception in hospitals, visitor registration or check-in and many more. The reliability of these compact integrated print modules also make them the perfect fit for the payment industry, the events sector and parking machines.

Anti-paper blocking system and presenter

All devices include an anti-jam function to prevent paper blockages. The KOP-3S01's advanced anti-jam feature prevents users pulling or blocking the receipt. Once the transaction is complete, the receipt exits from the printer for the customer to take. If not taken from, the kiosk can retract the receipt to protect potentially confidential information.

Maximum performance

With print speeds of up to 12 inches per second the entire printer range is designed for the most demanding applications where the efficient throughput of customers is critical. This is further enhanced with an unmatched speed of 40 inches per second of the ticket/receipt presenter which ejects receipts just in the blink of an eye.



Key highlights

- Top print speed up to 12 ips
- Advanced anti-jam function
- Designed, developed and built by Toshiba
- Ultra reliability for peace of mind
- High performance for enhanced customer throughput
- Compact & modular design
- Low total cost of ownership

Specifications

Models

With presenter	<u>KOP-3S01</u>	
Dimensions	125.3 x 154.7 x 108.4 mm	
Weight	1.16 kg	
Connector	3-pin Molex	
Without presenter	<u>KOP-3S02-B3</u>	<u>KOP-3S02-J2</u>
Dimensions	125.2 x 107.2 x 108.4 mm	124.7 x 143.1 x 93.5 mm
Weight	0.9 kg	1 kg
Connector	3-pin Molex	2-pin Molex
	<u>KOP-3S06-E3</u>	
	125.2 x 107.2 x 108.4 mm	
	0.9 kg	
	3-pin Molex	

General

Print method	Direct thermal
Print head	Flat head
User interface	LED status bezel - 3 colour indications
Operating temperature / humidity	5°-50°C / 25-90% non-condensing relative humidity
Power supply	external, DC 24 V, 75 W (max.)

Print

Resolution	203 dpi (8 dots/mm)	
Sensor	<u>3S01</u>	<u>3S02/3S06</u>
	Advanced anti-jam feature (integrated receipt loop)	Jam sensor with pull or block detection
Max. print speed	305 mm/sec (12 ips)	
Max. presenter speed	1.016 mm/sec (40 ips) ¹⁾	
Print width	<u>3S01/3S02-B3/3S06</u>	<u>3S02-J2</u>
	54, 72 mm	72 mm
Cutting mode	Full or partial	
Barcodes	UPC-A, UPC-E, JAN8 (EAN8), JAN13 (EAN13), Code 39, Code 93, Code 128, Interleaf 2 of 5 (ITF), Codabar(NW-7), PDF417, QR	
Fonts	Font A: Font Size 1: 12 x 24, Font Size 2: 13 x 28 Font B: Font Size 1: 9 x 24, Font Size 2: 10 x 28 Double Bytes Font: Font Size 1: 24 x 24, Font Size 2: 26 x 28	

Media

Alignment	Centred	
Paper width	<u>3S01/3S02-B3/3S06</u>	<u>3S02-J2</u>
	58, 80 mm	80 mm
Media thickness	0.05 - 0.065 mm	
Media roll inner diameter	12 mm	
Media roll outer diameter	152.4 mm (6 inch)	
Media type	On a roll	

Software & connectivity

Emulation	ESC / POS / OPOS / Java POS	
Printer driver	Windows XP/7/8/10	
Interface	<u>3S01/3S02</u>	<u>3S06</u>
	USB	USB + LAN

Options

For all devices	3" top drop-in loading paper holder
Options for KOP-3S01, KOP-3S02-B3, KOP-3S06-E3	6" side loading (left or right) paper holder with arm
Options for KOP-3S02-J2	6" top drop-in loading paper holder

About Toshiba Tec

Toshiba Tec UK Imaging Systems Ltd is part of the globally operating Toshiba Tec Corporation, active in various high-tech industrial sectors.

Toshiba Tec Corporation is a leading provider of information technology, operating across multiple industries - ranging from retail, education and business services to hospitality and manufacturing. With headquarters in Japan and over 70 subsidiaries worldwide, Toshiba Tec Corporation helps organisations transform the way they create, record, share, manage and display information.

For more information please contact us:

Toshiba Tec UK Imaging Systems Ltd

Abbey Cloisters
Abbey Green
Chertsey
Surrey KT16 8RB

Telephone

0845 224 4944

Email

info@toshibatec.co.uk

Website

www.toshibatec.co.uk

Together Information is Toshiba's vision for how people and organisations create, record, share, manage and display ideas and data.

It is based on our belief that the most successful organisations are those that communicate information in the most efficient way.

We make that possible through an integrated portfolio of industry-specific solutions, all of which reflect Toshiba's commitment to the future of the planet.